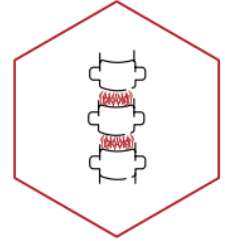
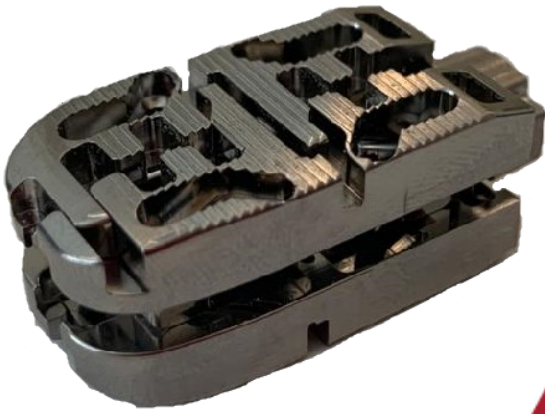


ELYON EXPANDABLE TITANIUM LUMBAR INTERBODY CAGE



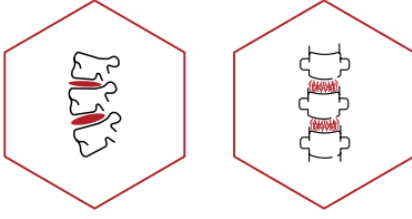
**Perfect for
provide
interbody
fusion.**

ELYON EXPANDABLE TITANIUM LUMBAR INTERBODY CAGE HIGHLIGHTS

- ♀ Ti6-Al4-V Alloy raw material that promote long-term stability.
- ♀ Segmental bone graft area for better fusion.
- ♀ Enable less patient trauma & surgical team efficiency.
- ♀ Sharp teeth on surface of implant ensure primary stability and prevent migration of cage.
- ♀ Allows restoration of the height and width of the intervertebral space due to the expandable structure.

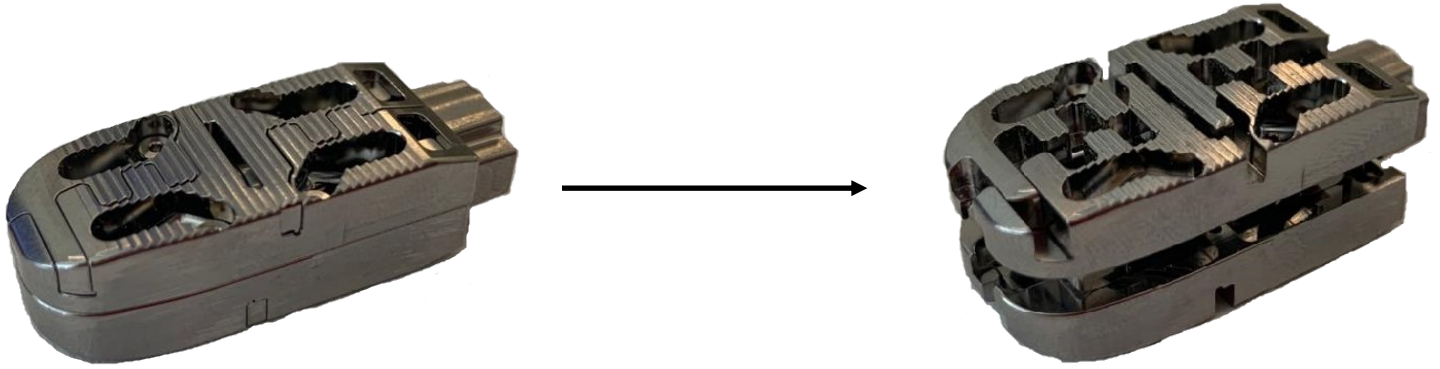


ELYON EXPANDABLE TITANIUM LUMBAR INTERBODY CAGE



PURPOSE OF USAGE

ELYON Expandable Titanium Lumbar Interbody Cage is a comprehensive interbody cage system that provides structural stability. It is comprised of expanding titanium interbody cages of various sizes. The system has the instruments with the system to facilitate placement and expansion of the interbody device. ELYON Expandable Titanium Lumbar Interbody Cage is a lumbar intervertebral body fusion device, and is indicated for use with autogenous bone graft and allograft comprised of cancellous and/or corticocancellous bone graft in patients with degenerative disc disease (DDD) of the lumbar spine, L1 to S1. These DDD patients may also have a spondylolisthesis or retrolisthesis at the involved level(s). ELYON Expandable Titanium Lumbar Interbody Cage can be implanted via posterior, transforaminal or lateral approach. They are manufactured from Ti-6Al-4V ELI (Grade 23) as per ISO 5832-3 and ASTM F136.



INDICATIONS

ELYON Expandable Titanium Lumbar Interbody Cage is a posterior lumbar intervertebral body fusion device and is indicated for use with autogenous bone graft in patients with degenerative disc disease (DDD) at levels from L1 – S1. These DDD patients may also have a spondylolisthesis or retrolisthesis at the involved level(s). ELYON Expandable Titanium Lumbar Interbody Cage can be implanted via posterior or transforaminal approach.

