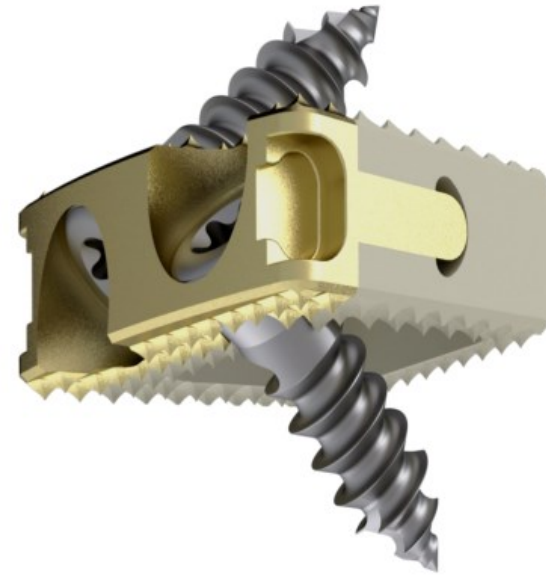
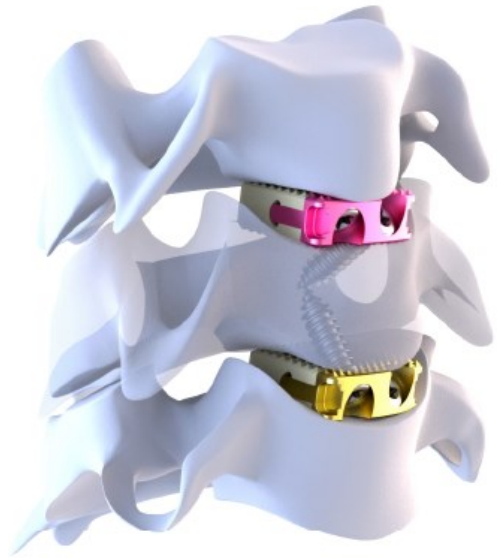


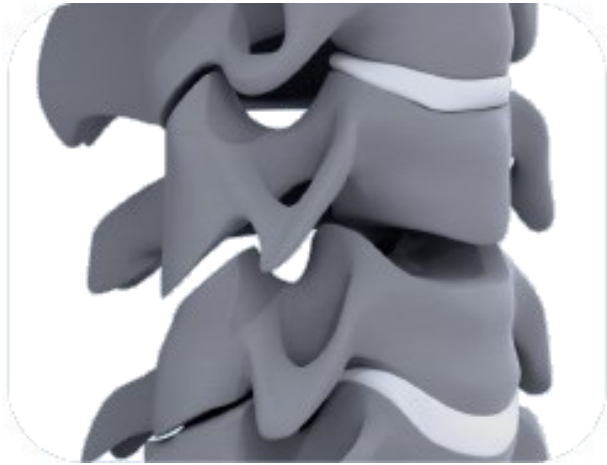
# TITANOPEEK ACF STAND ALONE CERVICAL CAGE SYSTEM SURGICAL TECHNIQUE



TITANOPEEK ACF STAND  
ALONE CERVICAL CAGE  
SYSTEM



# TITANOPEEK ACF STAND ALONE CERVICAL CAGE SYSTEM SURGICAL TECHNIQUE



## **Discectomy:**

With proper surgical technique, the area where the implant will be placed is cleaned from the discs and the appropriate area for the implant is prepared.

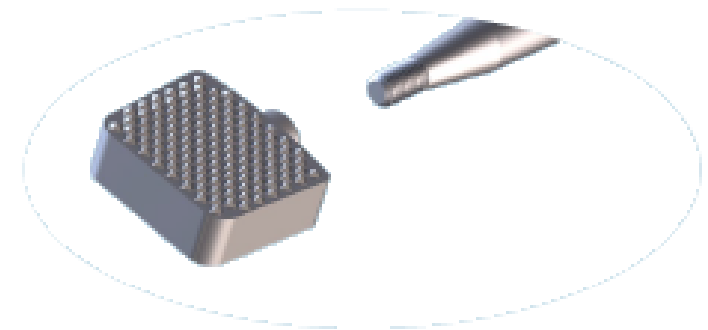
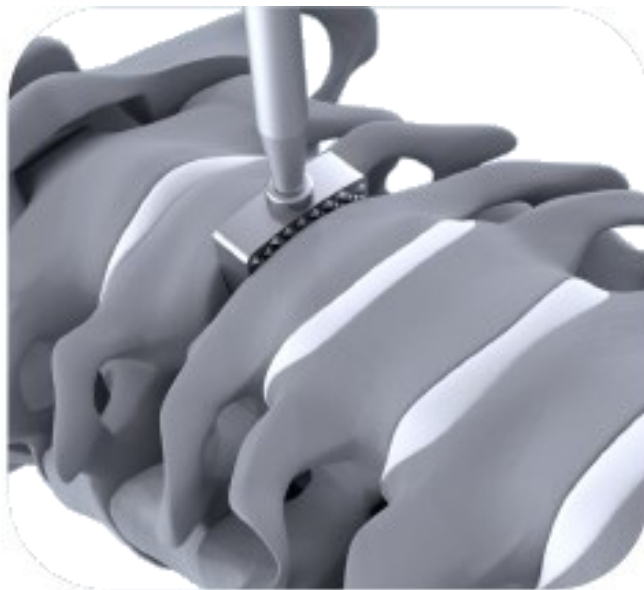


# TITANOPEEK ACF STAND ALONE CERVICAL CAGE SYSTEM SURGICAL TECHNIQUE

## IMPLANT SELECTION :

### Rasp

It helps to clean the disk parts and helps to choose the implant. After placing it in the holder, it is placed at a distance from small to large. It has 0 degree 5 degree lordosis angle,

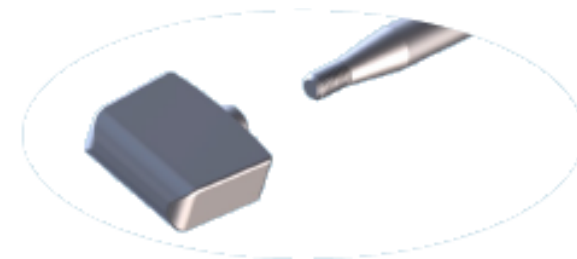


# TITANOPEEK ACF STAND ALONE CERVICAL CAGE SYSTEM SURGICAL TECHNIQUE

## IMPLANT SELECTION :

### Trial :

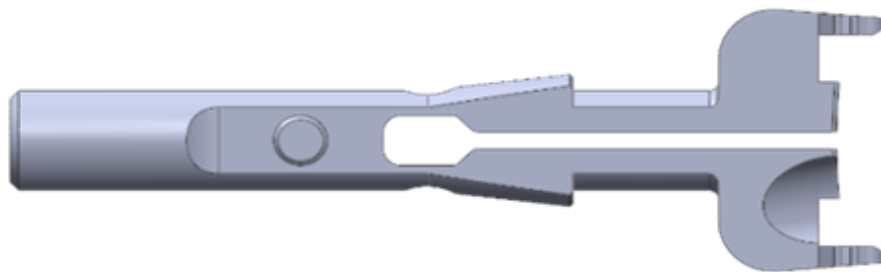
Implant selection is performed using the implants of the individual implant measurements. It has 0 degree 5 degree lordosis angle,



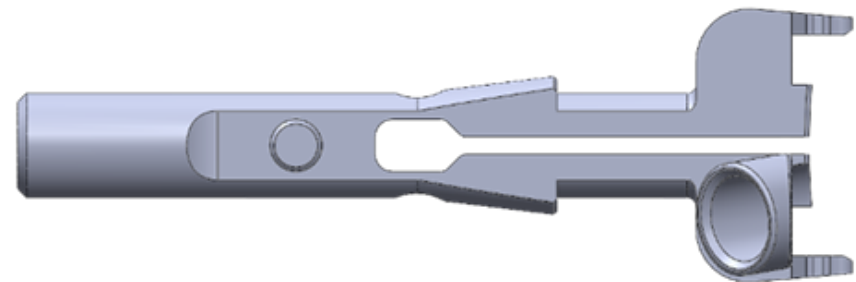
# TITANOPEEK ACF STAND ALONE CERVICAL CAGE SYSTEM SURGICAL TECHNIQUE

The inserted implant is placed in the implant holder. There are two types of implant holder models available.

- IMPLANT HOLDER DISTAL PARTS
- IMPLANT HOLDER DISTAL PARTS GUIDED



**Implant Holder Distal Parts**



**Implant Holder Distal Parts Guided**

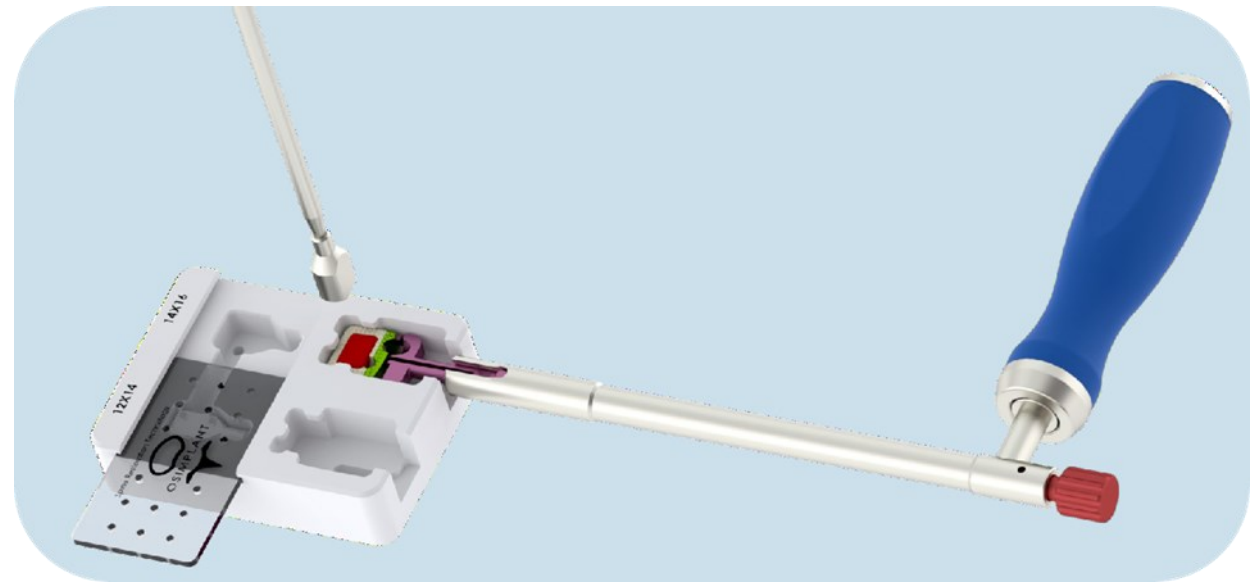
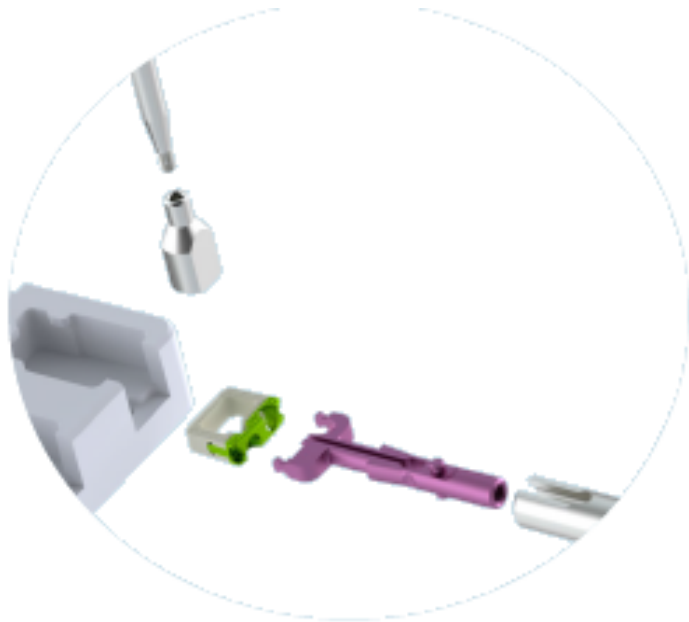


# TITANOPEEK ACF STAND ALONE CERVICAL CAGE SYSTEM SURGICAL TECHNIQUE

## PACK IMPLANT WITH BONE GREFT

### Graft Placement

Depending on the preference of the surgeon, the graft material, which is located in the middle of the Titanopeek, is placed with the help of a Bone Graft Tamp Caddies and a Rasp -Trial Driver.



# TITANOPEEK ACF STAND ALONE CERVICAL CAGE SYSTEM SURGICAL TECHNIQUE



## IMPLANT INSERTION

Titanopeek placed in the implant holder is inserted in the intervertebral disc space.



# TITANOPEEK ACF STAND ALONE CERVICAL CAGE SYSTEM SURGICAL TECHNIQUE

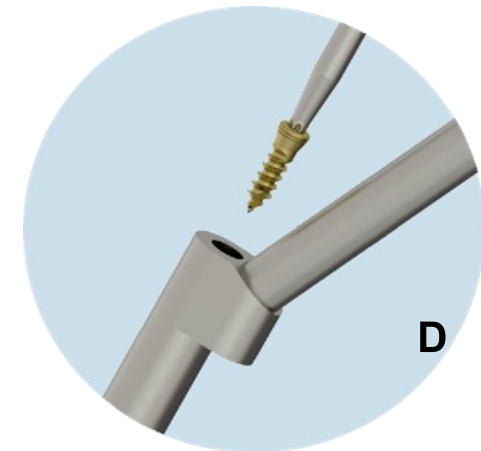
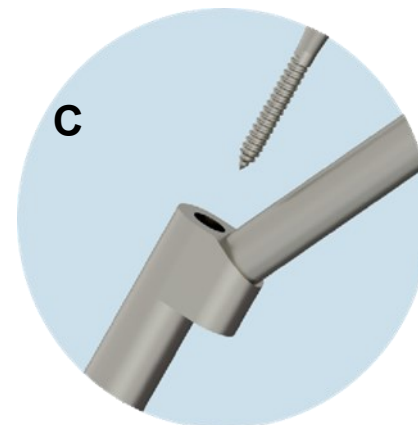
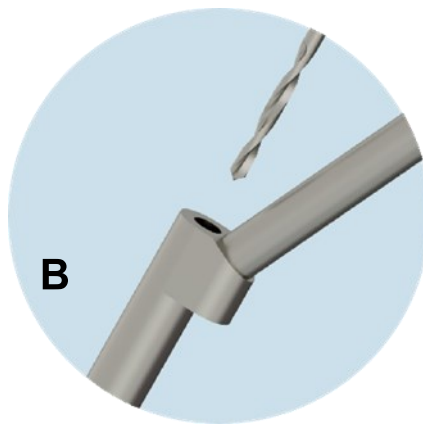
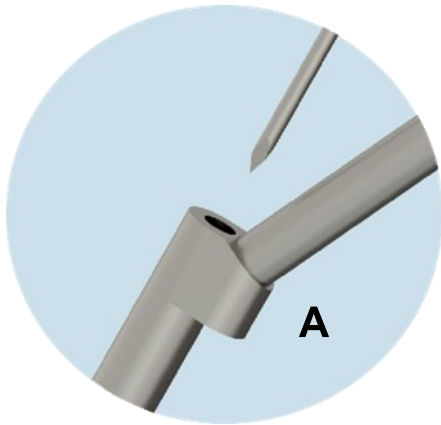


## Screw Fixation

### A. Drillguide Technique

According to the model of Titanopeek implant holder which is placed on the distance Titanopeek, suitable screw holes are opened for placing the screws in the bone by freehand or drillguide method. Screws are placed using awl, drill, tap, screw driver.

(A-Awl B-Drill C-Tap D-Screw driver)

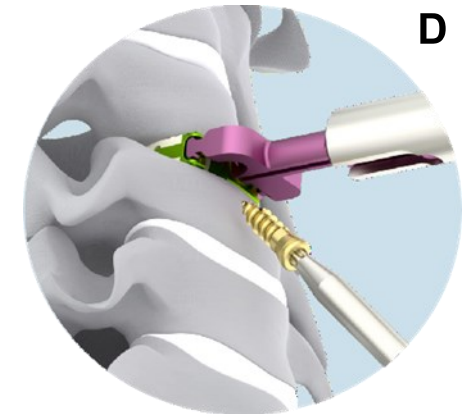
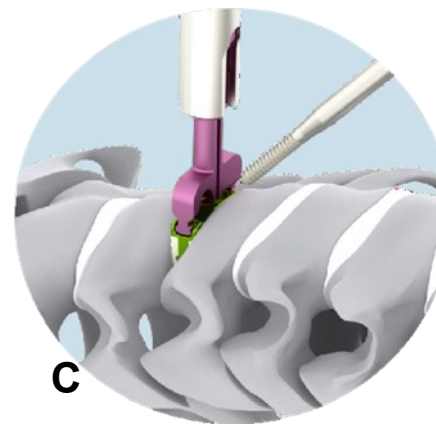
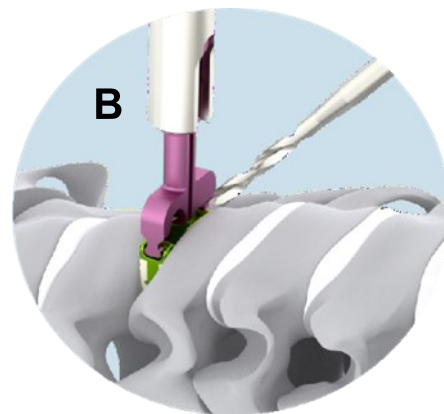
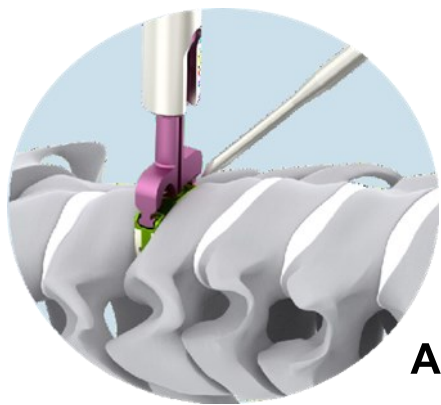


# TITANOPEEK ACF STAND ALONE CERVICAL CAGE SYSTEM SURGICAL TECHNIQUE



## Screw Fixation Alternative B. Freehand Technique

The appropriate screw holes are drilled to insert the bone screws through the Implant Holder Distal Parts / Implant Holder Distal Parts Guided selected on the Titanopeek placed in the distance. Screws are inserted using awl, drill, tap, screw driver.

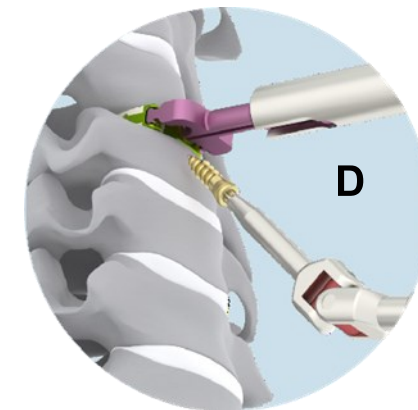
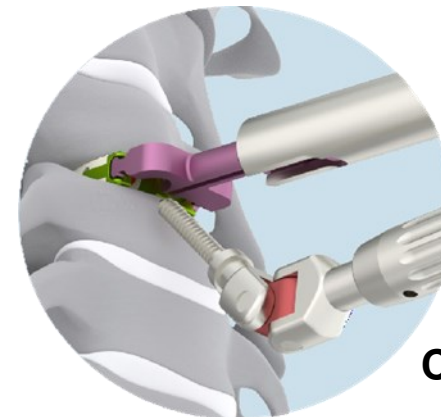
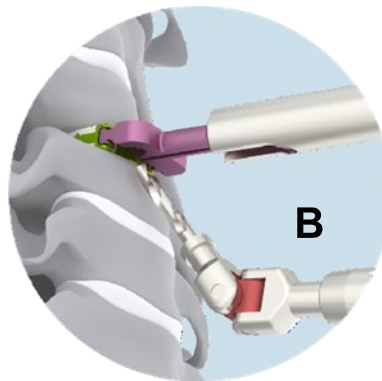
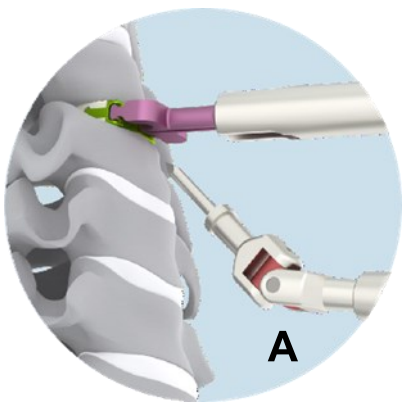
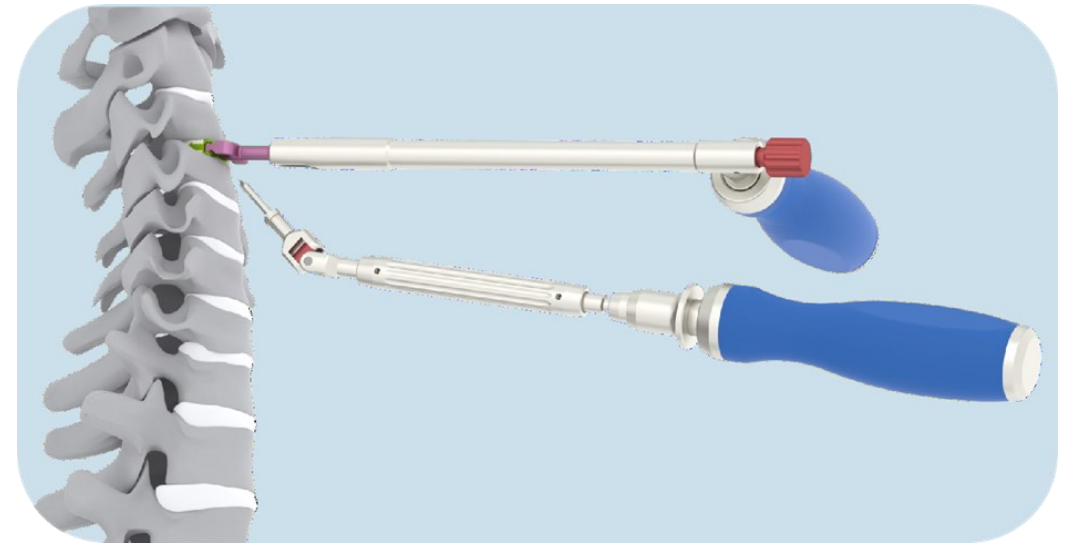


# TITANOPEEK ACF STAND ALONE CERVICAL CAGE SYSTEM SURGICAL TECHNIQUE

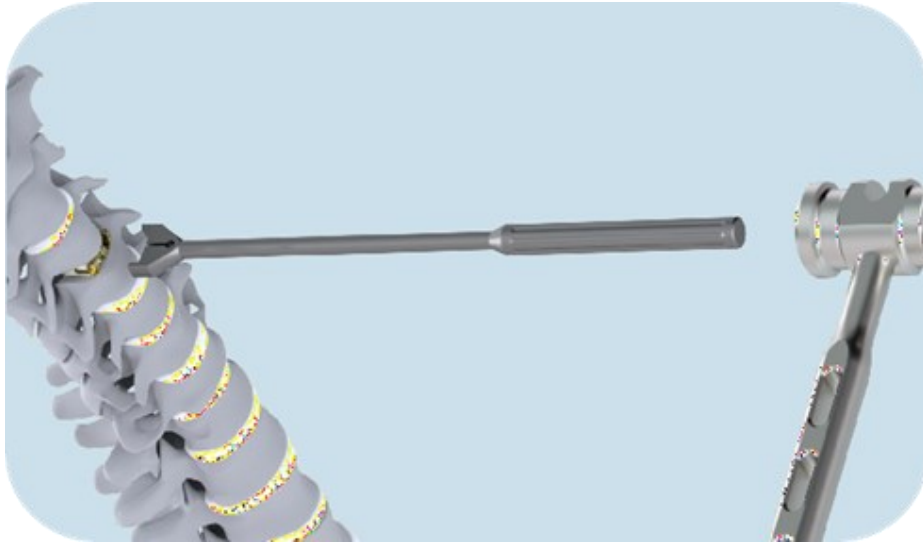
## Screw Fixation Alternative

### C. Angled Freehand Technique

With the Angled instruments selected on the Titanopeek placed in the distance, the appropriate screw holes are opened to place the bone screws on the Titanopeek implant holder. Screws are inserted using the awl, drill, tap, screw driver.



# TITANOPEEK ACF STAND ALONE CERVICAL CAGE SYSTEM SURGICAL TECHNIQUE



## Screw Fixation Alternative Implant Holder Not Used

The Titanopeek is intended to allow the implant to be placed further in the distance when it is desired to remove it after it has been placed at a distance.

### Free Impactor Expand



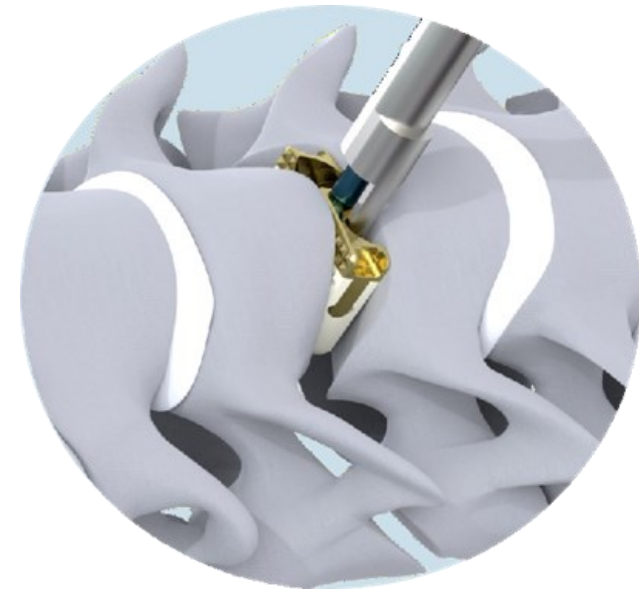
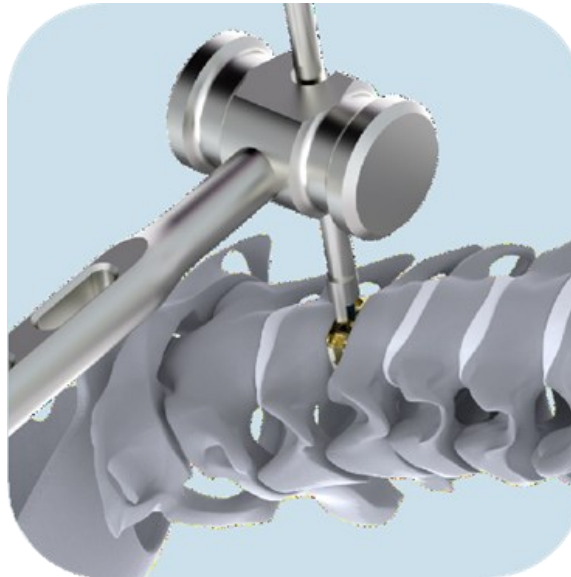
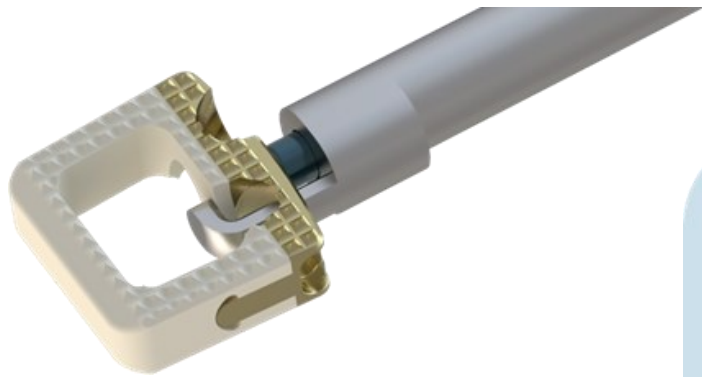
### Free Impactor



# TITANOPEEK ACF STAND ALONE CERVICAL CAGE SYSTEM SURGICAL TECHNIQUE

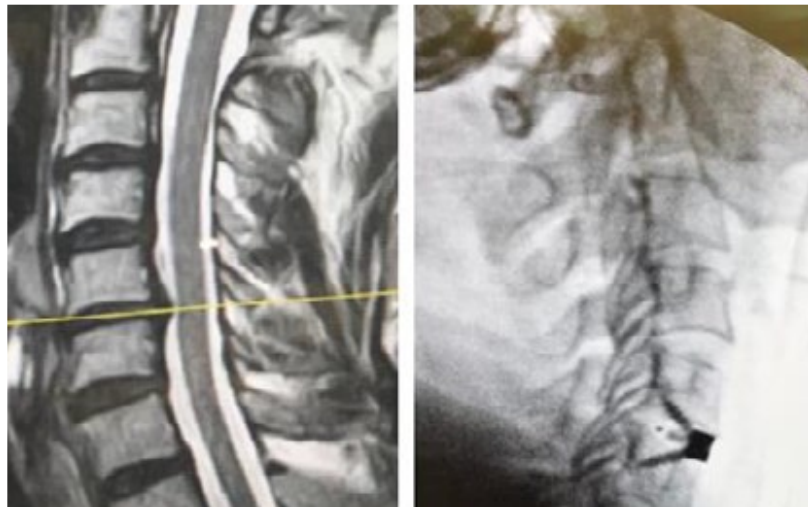
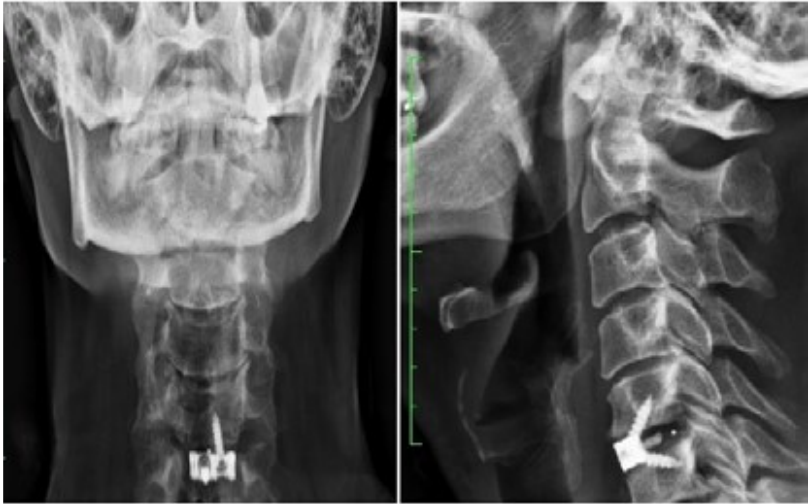
## IMPLANT REMOVAL

When the Titanopeek is desired to be removed, the screws are removed with the screwdriver, then implant is placed in the Implant Remover and removed with the aid of a hammer.

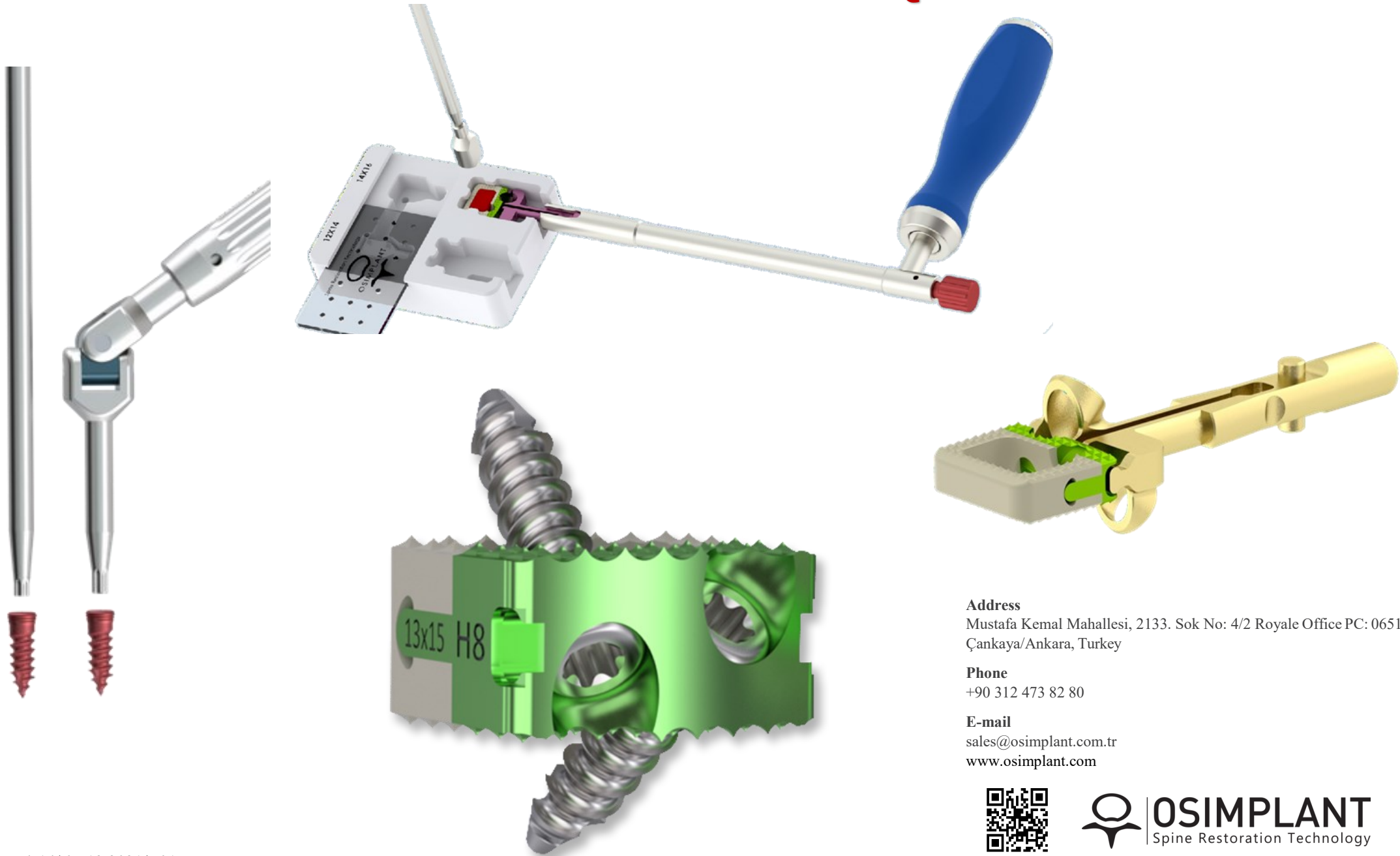


# TITANOPEEK ACF STAND ALONE CERVICAL CAGE SYSTEM SURGICAL TECHNIQUE

## POST-OPERATIVE IMAGES



# TITANOPEEK ACF STAND ALONE CERVICAL CAGE SYSTEM SURGICAL TECHNIQUE



**Address**

Mustafa Kemal Mahallesi, 2133. Sok No: 4/2 Royale Office PC: 06510  
Çankaya/Ankara, Turkey

**Phone**

+90 312 473 82 80

**E-mail**

[sales@osimplant.com.tr](mailto:sales@osimplant.com.tr)

[www.osimplant.com](http://www.osimplant.com)



**OSIMPLANT**  
Spine Restoration Technology