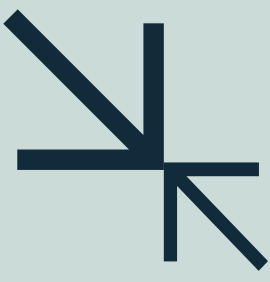


# modus *F* *portable*



**MODUS F Portable**  
Focused Power in Urology,  
A Portable Solution





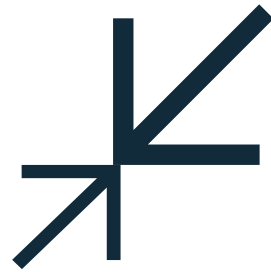
*User-Friendly  
and Efficient*

## PRACTICAL USE WITH *Innovative Design*

As one of the most advanced technologies in recent years, **Extracorporeal Shock Wave Therapy (ESWT)** devices offer a wide range of applications across different medical fields. Traditional ESWT devices are typically large and either stationary or wheeled units, and are recognized globally as one of the most commonly used models.

At **İnceler Medikal**, our innovative approach has led us to design a device that makes **ESWT technology portable, flexible, and practical**. Our **Modus Focused Portable** device makes treatment processes more accessible, aiming to **maximize the comfort of patients and users**.

Based on the principle of ease of use, the **innovative design** of our device offers a treatment process that is **independent of location**; providing an efficient alternative not only for clinics but also for those needing **at-home treatment**.



## FUNCTIONAL AND STATE-OF-THE-ART NEW HANDPIECE



Start-Stop  
Button Feature

## High Comfort with Start-Stop *Button Feature*

In addition to its portable and practical design, our **Modus Focused Portable** device stands out with its **newly designed handpiece** enhanced with **functional features**. The integration of **start-stop buttons** directly on the handpiece makes the device easier and more practical to operate. Its **modern design**, which allows for easy maneuverability, has been enriched with **innovative features to maximize user comfort**.



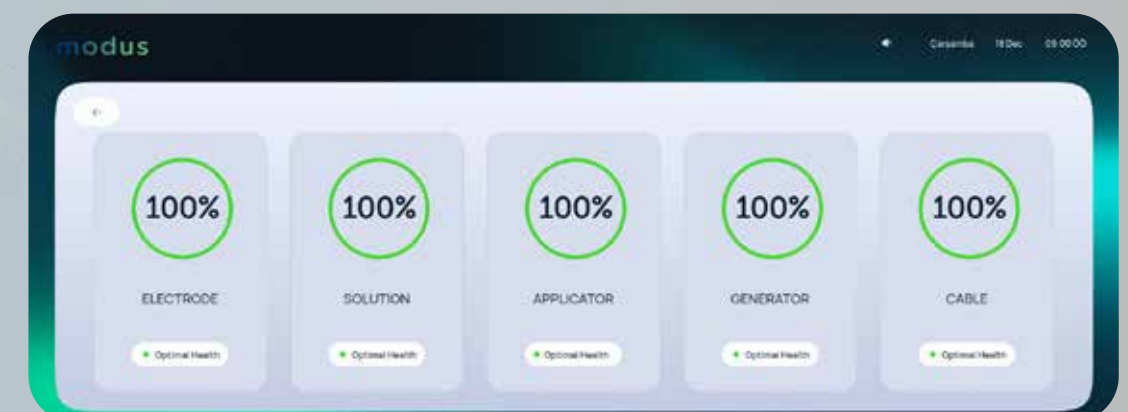
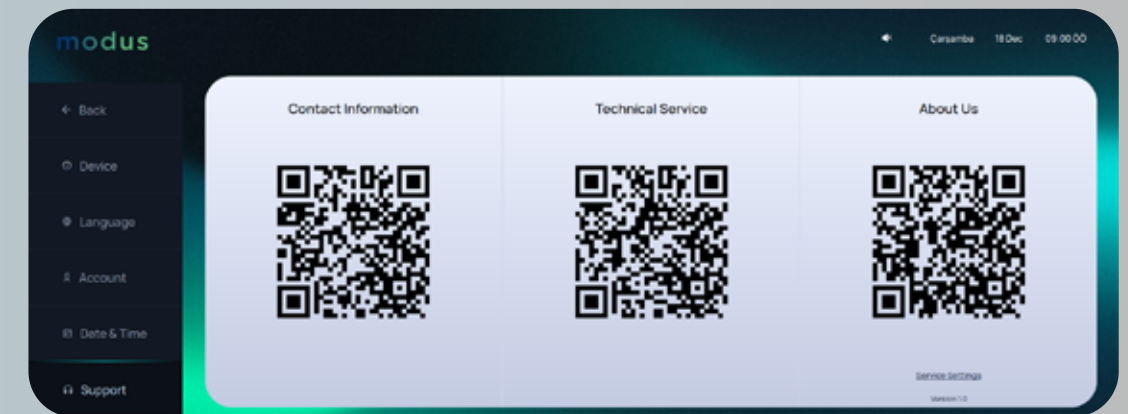


# Superior User Experience with Wide Screen Design

The standout **wide-screen design** of our **Modus Focused Portable** device enhances **user experience** during application and significantly improves comfort. Equipped with **high-standard color and touch screen technology**, the device facilitates the **control, monitoring, and tracking of treatment parameters**. Its **large screen feature** offers a practical and user-friendly interface.



Screen Size Offering a Wide Perspective





### Ease of Use and Portability

The Modus Focused Portable device is remarkably small and lightweight in terms of size and weight. This portability provides flexibility, enabling personalized treatment based on individual needs. The compact structure of the device allows both users and healthcare professionals to easily perform treatments in various environments, making each session more efficient and comfortable.



### Accessibility and Practicality

The portable device allows users to conveniently perform treatments at home or in their offices under medical supervision. This makes regular access to therapy more feasible.



### Painless and Non-Invasive Treatment

The Modus Focused Portable device is painless and requires no surgical intervention or anesthesia. This increases patient compliance, as the procedure is typically not felt, allowing patients to comfortably resume their daily activities immediately after treatment.



### User-Friendly Operation

The Modus Focused Portable device features a user-friendly interface. There is no need to deal with complex settings to start the treatment process. The device allows adjustment of intensity and frequency, and treatment can be initiated with the start/stop button. Additionally, a start/stop button is available on the handpiece as well. This feature makes the device practical and easy to use.



### Minimal Side Effects

The use of the Modus Focused Portable device generally carries a very low risk of side effects. Most patients do not experience any adverse effects. If mild discomfort occurs after treatment, it usually resolves quickly.



### Minimal Space Requirement

While traditional large ESWT devices require spacious dedicated areas in clinics, the portable device can be used in minimal space. This provides a significant advantage, especially for small clinics or patient rooms.



### Advanced Patient Monitoring and Data Management

The Modus Focused Portable device stores data from treatment sessions, enabling follow-up and tracking of therapy progress. It facilitates the evaluation of patients' treatment progress and allows easy modifications to treatment plans when necessary. Moreover, with regular monitoring, treatment outcomes can be made safer and more effective.

## DISCOVER THE SUPERIOR ADVANTAGES OF THE *Modus* *Focused Portable* **SYSTEM!**





# Modus Focused Portable

## HANDPIECE FEATURES

*Deeper Penetration*  
Achieved with Focused  
Applicator Head



- » Deep energy transmission focused on anatomical regions
- » Maximum comfort and ease of use thanks to its ergonomic design
- » Convenient one-touch on/off control
- » Excellent maneuverability with its lightweight structure
- » Long-lasting, maintenance-free applicator head design
- » Flexible, easily interchangeable head options tailored to treatment needs

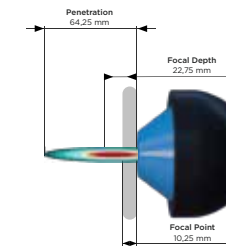
**Modus Focused Portable** delivers superior energy penetration up to 0 – 95 mm, enabling fast and effective access to tissues. With its unique focusing technology, it precisely targets deep tissues, allowing you to achieve remarkable treatment outcomes in a short time.

## Powerful Applicator Options Tailored to Every Need

**UltraFocus(UF)** The Applicator with the Highest Focused Energy Output

Penetration Depths

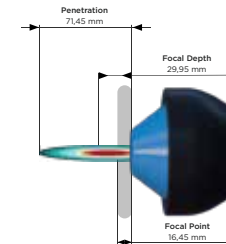
- 64,25 mm
- 22,75 mm
- 10,25 mm



**DeepForce (DF)** Applicator with High Focused Energy and Greater Penetration Depth

Penetration Depths

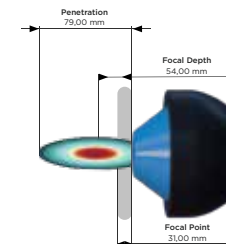
- 71,45 mm
- 29,95 mm
- 16,45 mm



**PenetraMax (PM)** Applicator with Greater Penetration Depth and a Wider Treatment Area

Penetration Depths

- 79,00 mm
- 54,00 mm
- 31,00 mm



### Higher Energy Output

Delivers safe and effective energy transfer to the treatment area with maximum power.



### High Energy Depth

Effectively delivers energy to deeper tissues, accelerating the healing process.



### Fast and Effective Treatments

Accelerates treatment processes with maximum impact in a shorter time.

## Modus Focused Portable

### Effective Treatment in Urology

Our **portable and compact** device offers effective results in the treatment of various urological conditions. It makes the treatment of **erectile dysfunction**, prostate issues, prostatitis, and **Peyronie's disease** more practical and accessible by using one of the most powerful methods — **shock wave therapy**. Its small, lightweight, and portable design ensures easy use in clinical settings and makes it **suitable for home use**.

The device offers an **alternative treatment option** for men seeking non-drug and non-surgical solutions, providing a highly effective alternative for mild to moderate erectile dysfunction with success rates of up to 90%. Seeking treatment for erectile dysfunction, prostate problems, prostatitis, or Peyronie's disease in a clinic can be **time-consuming** — this device offers a solution.

Our newly designed portable device meets treatment needs at home and **ensures easy application anytime and anywhere**. Treatment sessions typically take only **15–20 minutes**, and patients using the Modus Portable ESWT device can return to their **daily activities immediately** after the session.

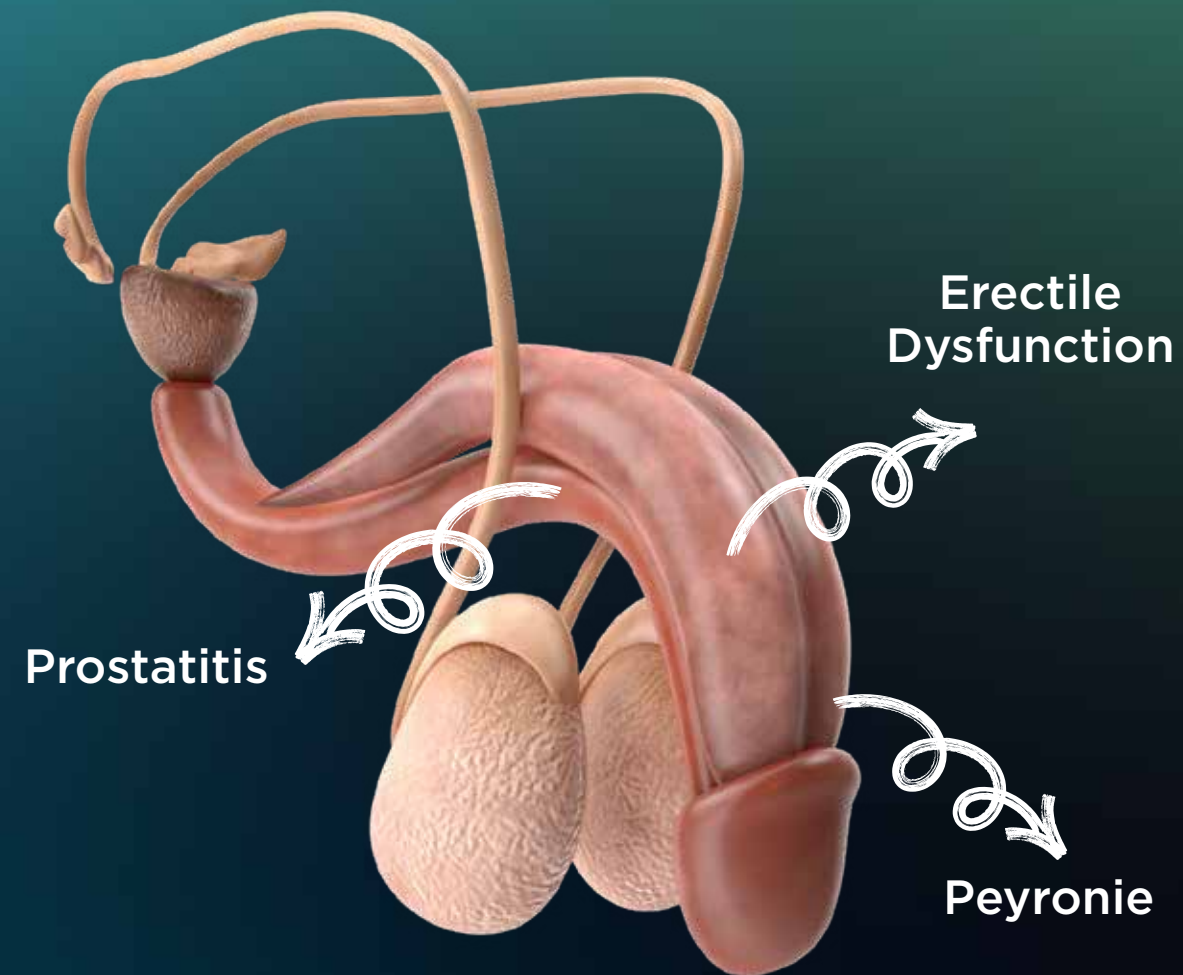
### Flexible, Time- and Location-Independent Treatment for Urological Conditions

The focusing mechanism directs the shock wave precisely to a specific area of the body. The **Modus Focused Portable** device is effective in treating **erectile dysfunction** and is also used in physiotherapy, orthopedics, veterinary medicine, and urology. Shock waves are used to initiate the formation of new tissue in certain areas of the body. This results in **new blood vessel formation** through a process called **neovascularization**.

As new blood vessels form and **blood flow in the penis increases**, the body's **natural erectile function** returns to normal.

modusF





## ERECTILE DYSFUNCTION (ED)

### *What is it?*

All men may occasionally experience difficulties with achieving or maintaining an erection due to various reasons. **Stress, fatigue, alcohol consumption, or incompatibility with a partner** can temporarily make it harder to get or sustain an erection. However, **if this problem becomes persistent and occurs regularly**, it may be medically defined as **erectile dysfunction (ED)**.

Erectile dysfunction is a health condition defined as **the inability to achieve or maintain** an erection over a prolonged period. This condition should be diagnosed **when the problem is frequent, recurring, and becomes permanent**.



# Erectile Dysfunction

## What Causes It?

Problems achieving an erection are often due to various **stressors during sexual intercourse**, but stress-related issues are usually **temporary**. To medically diagnose erectile dysfunction, the difficulty in achieving or maintaining an erection must be persistent.

More prolonged difficulties typically stem from issues in the blood vessels that supply the penis. If **insufficient blood flow** reaches the penile tissue, an erection cannot occur. Damage to the **nerves in the penis**—for example, from certain injuries—can also contribute to erection problems.

Conditions such as **atherosclerosis** (hardening or blockage of the arteries), heart disease, high blood pressure, or diabetes (high blood sugar) are other common causes of erectile dysfunction. Men who experience erection problems often have both **physical and psychological factors at play**, and in some cases these factors can trigger one another.

**Below are some of the main risk factors that can interfere with penile erection:**



The age group in which erectile dysfunction is most common is over 50 years of age. Therefore, individuals over the age of 50 may encounter erectile dysfunction.



Diseases such as diabetes, high blood pressure, high cholesterol, cardiovascular diseases and prostatitis can cause erectile dysfunction.



Smoking, excessive alcohol consumption and drug use are also risk factors for all sexual dysfunctions.



Overweight and lack of exercise.



Psychological Factors



## Erectile Dysfunction What Causes It?

The process of male sexual arousal involves the filling of sinusoids within the tissue of the penis, known as the **Corpus Cavernosum**, with blood. During sexual arousal, signals from the central nervous system trigger the expansion of arteries, allowing more blood to flow to these regions. The increase in blood flow also causes a rise in pressure, which activates the **Tunica Albuginea** region and helps maintain the erection. This structure is crucial for maintaining blood in the penis during an erection. However, any disruption to blood flow, whether due to physical or vascular problems, can lead to **erectile dysfunction (ED)**.

One of the modern treatment methods for ED, **Modus Focused Portable**, utilizes shockwaves with low intensity to stimulate the vascular structures, promoting increased blood circulation. This technique plays an important role in supporting the natural erectile mechanism and treating erectile dysfunction.

20  
minutes

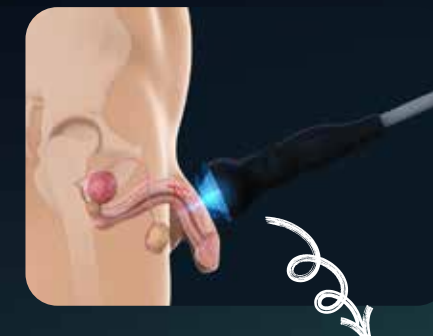
## LOW-INTENSITY SHOCK WAVE THERAPY

**Low-intensity shockwave therapy** creates mechanical stress and microtrauma in specific anatomical areas, initiating the biological healing process in the body. These microtraumas stimulate angiogenic factors (growth factors that promote the formation of new blood vessels).

As a result, blood vessels in the penis are renewed, and the process of **neovascularization** accelerates, improving natural blood circulation. Ultimately, the erectile mechanism is strengthened, and **erection problems (erectile dysfunction)** are treated.



**Before Treatment**  
Reduced vessel  
density and inadequate  
blood flow.



**During Treatment**  
Microtrauma triggers  
the regeneration  
process through  
angiogenesis.



**After Treatment:**  
Increased vessel  
formation, improved  
vascular structure,  
and better blood  
circulation.

This non-invasive, drug-free, and safe treatment option offers a promising solution for erectile dysfunction.

**NON-INVASIVE, EFFECTIVE  
AND RELIABLE MODUS  
FOCUSED PORTABLE**



# Peyronie's Disease (Penile Curvature)

## What Is It?

Peyronie's disease is characterized by the development of plaques on the penis, causing shape abnormalities and curvature, leading to discomfort. The disease occurs due to changes in the tissue surrounding the **Corpus Cavernosum** of the penis, specifically in the **Tunica Albuginea**. Over time, these changes form hard plaques, resulting in penile curvature. Peyronie's disease is most commonly seen in men between the ages of **40-60**.

Penile curvature can be **congenital** (present at birth) or acquired (develops later in life). Congenital Peyronie's disease occurs when one of the erectile tissues does not develop adequately, leading to curvature. **Acquired (later-onset)** Peyronie's is generally seen in men over **50** and occurs due to the formation of scar tissue inside the penis.

The disease is more commonly observed in individuals with risk factors like **diabetes, hypertension, smoking, and alcohol use**.

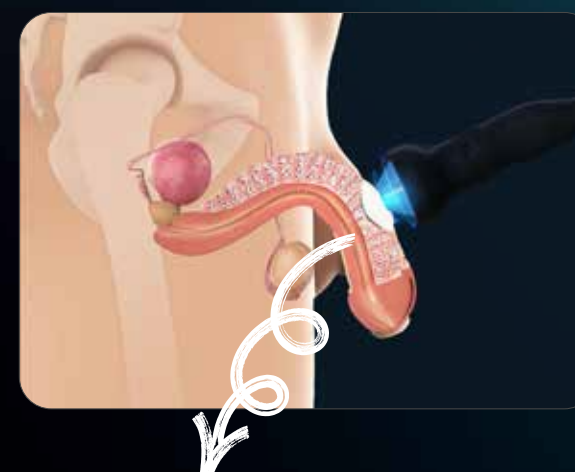
## Shockwave Therapy for Peyronie's Disease

- Modus Focused Portable helps reduce pain, alleviate erectile dysfunction, and improve penile curvature in Peyronie's patients.
- Low-energy shockwaves prevent plaque formation while increasing blood flow in penile tissue, activating the healing mechanisms.
- Through the positive effects on tissue during treatment, patients not only benefit from curvature treatment but also gain improved erectile function and quality of erections.

# Peyronie's Application Area

**Modus Focused ESWT** is a non-invasive treatment method that uses low-intensity shockwaves to target the shaft and the **crus region** of the penis, stimulating blood flow to these areas and aiding in the treatment of Peyronie's disease. After the treatment, patients can continue their daily activities.

No anesthesia is required for the procedure. The treatment should be applied **at least once or twice a week**, depending on the severity and size of the plaque, typically requiring **6-24 sessions**. The duration of each session is **30-40 minutes**.



It improves the quality of life for patients by reducing penile curvature.



## Prostatitis

### *What Is It?*

The **prostate** is an organ located just below the bladder and plays a vital role in the male reproductive system. **Prostatitis** refers to inflammation of the prostate gland, which can cause discomfort, pain, and functional disturbances in men.

Prostatitis can present as **acute** or **chronic**. While some cases of prostate inflammation resolve with mild symptoms and simple treatment, others may require prolonged medical intervention. **Chronic prostatitis** is one of the most common urological conditions in men and can significantly reduce quality of life.

It is especially common in men **under 50**. In men **50 and older**, prostatitis often occurs alongside other prostate issues, such as **benign prostatic hyperplasia** or **prostate cancer**.

## The Link Between Prostatitis and Erectile Function

### *What Is the Connection?*

The prostate can essentially be classified into four main categories: **chronic bacterial prostatitis**, **chronic pelvic pain syndrome**, **asymptomatic inflammatory prostatitis**, and **acute bacterial prostatitis**. Among these, **chronic pelvic pain syndrome** is the most prominent. Scientific studies have shown that the same **underlying inflammation** can cause both prostatitis and erectile problems. In other words, the inflammatory processes that lead to **erection difficulties** can also give rise to prostatitis. Consequently, men suffering from prostatitis often experience **erectile dysfunction** as well. Additionally, in cases of prostate cancer, it is well known that the inflammation—and the **hormone therapies** used to treat it—can disrupt male sex hormones.

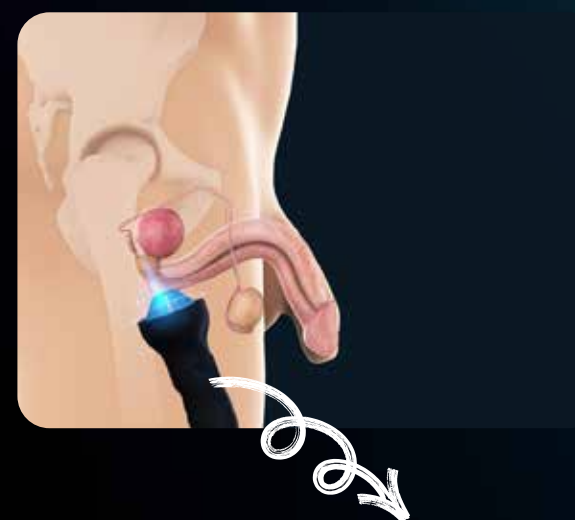
As a result, someone undergoing treatment for prostatitis may develop **erection problems** due to the effects of the hormones they receive. Likewise, prostate cancer surgery typically involves removing or damaging the **nerves responsible** for erection, which in turn leads to **significant erectile dysfunction**.

## Shockwave Therapy for Prostatitis (Modus Focused Portable)

- > Stimulates new blood-vessel formation.
- > Enhances circulation to accelerate healing.
- > Reduces inflammation to relieve pressure on the prostate gland.
- > Regulates muscle contractions and promotes pelvic relaxation.
- > Supports nerve conduction to improve sexual function.
- > Studies show up to an 80% improvement in prostatitis-related pain and urinary symptoms.

### *Application Area for Prostatitis*

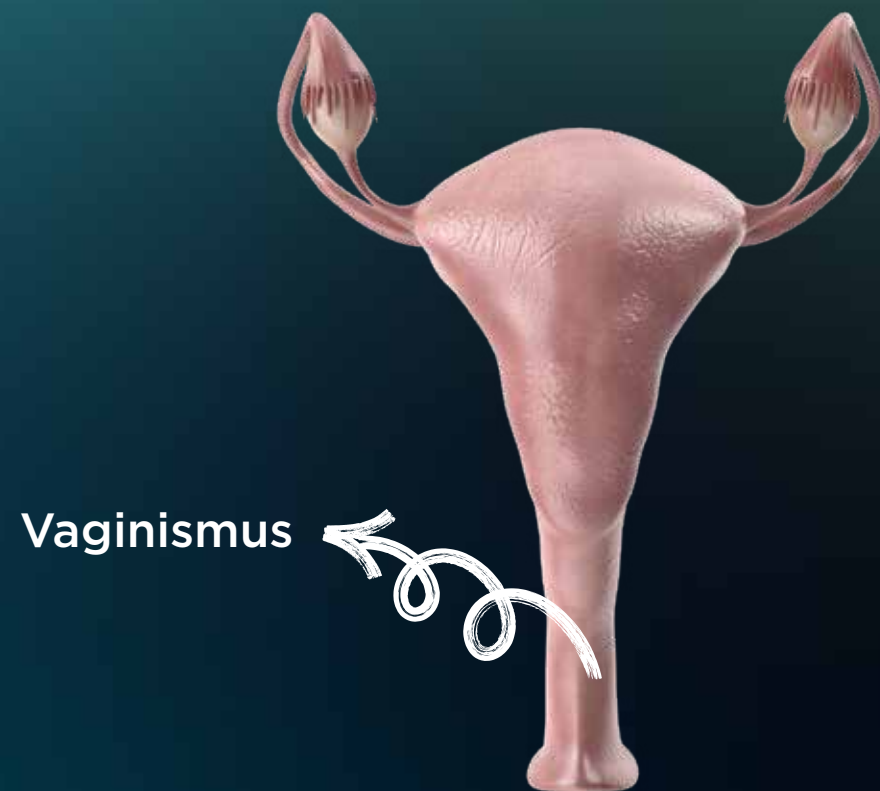
The **Modus Focused Portable** treatment is applied noninvasively to the **perineal region** (between the testicles and the anus) and through the skin. No anesthesia or hospital stay is required. Treatments are given **twice a week for 6-12 sessions**, with each session lasting **about 20 minutes**.



Accelerates healing by  
increasing blood flow  
in the pelvic area.







## Vaginismus

### *What Is It ?*

Vaginismus is a sexual dysfunction characterized by the **involuntary contraction of vaginal muscles**, which makes intercourse impossible or extremely painful. As a result of **deep-seated misconceptions, fears, or traumas**, the pelvic muscles in the outer third of the vaginal canal spasm reflexively. This “**self-protection mechanism**” can render sexual penetration impossible.

In women with vaginismus, these spasms may occur not only in the vaginal area but also in the **abdominal, lower back, buttock, and thigh muscles**. Such widespread muscle contractions can lead to **muscle pain and an overall sense of tension** following attempts at intercourse. The severity of symptoms varies from person to person, depending on the degree of vaginismus.







# Shockwave Therapy for Vaginismus (Modus Focused Portable) Treatment

Modus Focused Portable is an innovative solution that improves women's quality of life by making sexual intercourse painless and comfortable. It helps reduce painful spasms and severe discomfort during intercourse, assisting in the restoration of natural sexual function.

Each treatment session lasts approximately **20 minutes**, and a total of **6 sessions** is generally recommended. During this process, **new blood-vessel formation** is supported and **tissue regeneration** is accelerated, resulting in lasting healing.



# Advantages of Modus Focused Portable

-  Reduces vaginal muscle spasms and involuntary contractions, ensuring a painless, comfortable sexual experience.
-  Low-intensity shockwaves boost local blood flow, relaxing muscles and allowing vaginal tissues to loosen.
-  Stimulates new blood-vessel formation, accelerating tissue renewal and the overall healing process.
-  Clinical studies show that in **75% of patients**, pain or burning during intercourse is markedly reduced from the very first sessions.
-  The treatment is painless, drug-free, and non-invasive—designed for maximum patient comfort.
-  Its user-friendly interface makes the procedure easy to perform and enhances overall quality of life.

With Modus Focused Portable, you can effectively and safely address vaginismus and embark on a new chapter in sexual health.



Painless and  
comfortable treatment  
with shockwaves.



## How Is Erection Treatment with *ESWT Applied?*

Shockwaves are applied to five different regions of the penis. Pulses are delivered onto the structures responsible for erection within the penis, taking care to avoid areas where the nerves run. The key is to direct shockwaves to the area known as the Corpus Cavernosum (each of the paired erectile tissue masses on either side of the penis that fill with blood to produce rigidity) in order to achieve an erection.

In each session, 300 shockwaves are delivered to each region, for a total of 1,500 pulses. The treatment consists of 6 sessions in total. Depending on the severity of the condition, the course may be completed in 6-12 sessions. Each session lasts approximately 20 minutes. No sedation, tranquilizers, or other preparations are required beforehand.

There are absolutely no side effects—no pain, soreness, swelling, bruising, burning, or irritation—during or after the procedure. After the treatment, the patient can immediately return to their daily life.

### ERECTION TREATMENT IN 6 STEPS



1. APPLY GEL



2. APPLY SHOCKWAVES TO  
REGION 1 ON THE LEFT SIDE  
- PROXIMAL PENILE SHAFT  
(the root of the penis)



3. APPLY SHOCKWAVES TO  
REGION 1 ON THE RIGHT  
SIDE - PROXIMAL PENILE  
SHAFT (the root of the penis)



4. APPLY SHOCKWAVES  
TO REGION 2 ON THE LEFT  
SIDE - MID PENILE SHAFT  
(the body of the penis)



5. APPLY SHOCKWAVES TO  
REGION 2 ON THE RIGHT  
SIDE - MID PENILE SHAFT  
(the body of the penis)



6. APPLY SHOCKWAVES TO  
REGION 3 ON THE RIGHT SIDE -  
DISTAL PENILE SHAFT (the area  
farthest from the body's center)

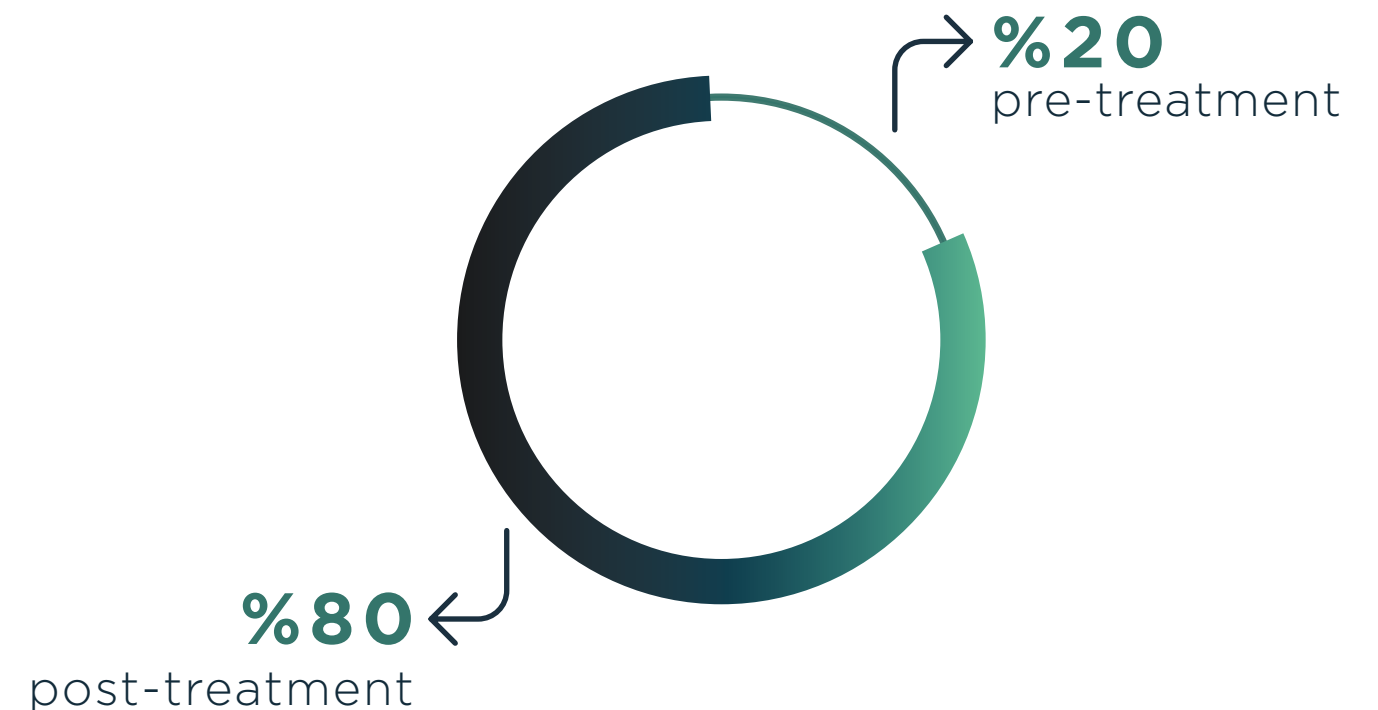
## Differences from OTHER TREATMENT METHODS

**Current non-surgical erectile dysfunction treatment methods include intracavernosal injections of intravenous vasodilator agents.** In these methods, blood flow is accelerated by dilating the diameter of the vessel. However, the **disadvantage** of these treatment methods is that **they do not eliminate the pathological factors** that make the penis erect. They are usually used before sexual intercourse and have a **very limited duration**. In medical treatment, pills are taken orally and the active ingredients enter the bloodstream. This can lead to **serious side effects**, especially in men with cardiovascular diseases and people taking certain heart medications.







In **Modus Focused Portable** treatment, as a local procedure, **focused shock waves** stimulate only the blood vessels in the targeted area. In treatment with **Modus Focused Portable**, **pathological factors are completely eliminated and full recovery** is observed even in patients with serious health problems. While vascular structures do not heal during other treatment methods, **new healthy vascular formations** are observed as one of the positive results of Modus Focused Portable treatment. This avoids risky side effects that are more common in people with cardiovascular disease. In addition, since it is a local procedure, **no surgical intervention is required**. Modus Focused Portable is a non-invasive treatment method and does not involve any surgical procedure. **Each session lasts approximately 20 minutes** and the patient can resume their daily life.

This leads to deformities due to the formation of **hard plaques** in the penis. **Peyronie's disease** occurs as a result of changes in the structure of the sheath called **tunica albuginea** surrounding the penis and the formation of hard plaques. These plaques cause deformities in the penis. Lesions are usually seen on the upper part of the penis. This disease is most common in the **40-60 age range**. Penile curvature may be congenital or may occur later in life for various reasons. The main cause of congenital Peyronie's disease is the **underdevelopment of one of the two spongy tissues** that make the penis erect. In this case, the penis bends towards the underdeveloped side. However, **non-congenital penile curvature usually occurs in people over the age of 50. In these cases**, Peyronie's disease is caused by **calcification** between the spongy tissue and the surrounding sheath. This causes the penis to become hard. Peyronie's disease is more common in people with **diabetes, smokers, alcohol drinkers and people with high blood pressure**.

## AVERAGE SUCCESS Rate



## Advantages and Performance

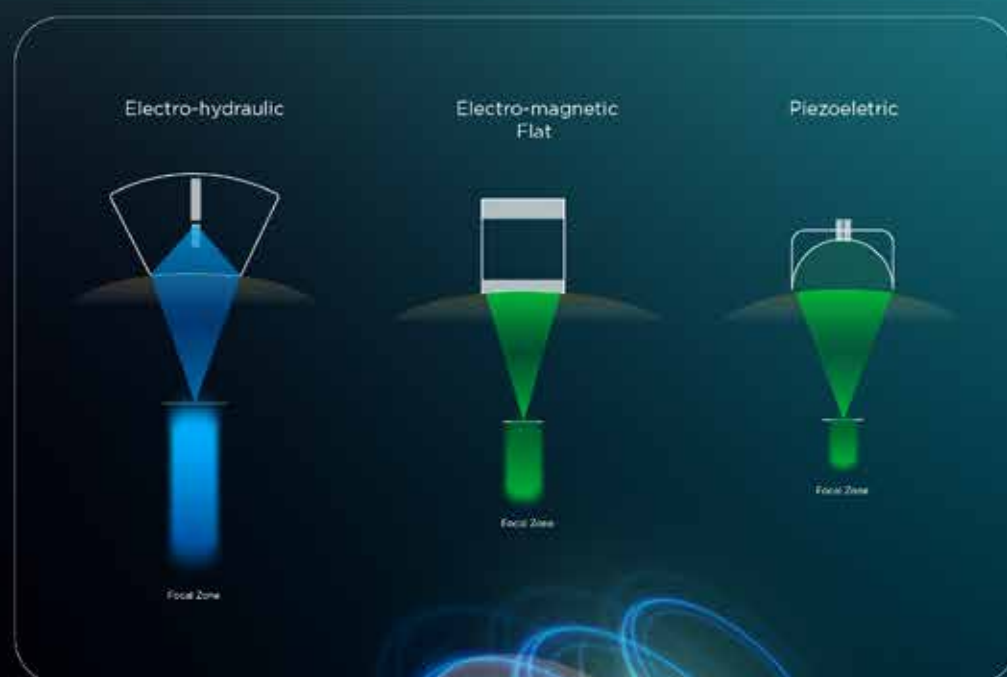
-  No drugs, prostheses, or similar aids are used during treatment. This method is entirely non-invasive.
-  After Modus Focused Portable therapy, patients no longer need any previously administered medical treatments.
-  The success rate of Modus Focused Portable exceeds 80%. Even in severe, medication-resistant cases, success rates surpass 60%.
-  Unlike other therapies, patients can return to their normal activities immediately after the procedure. No repeat application is needed before sexual intercourse, and no anesthesia or sedatives are used during or after treatment.
-  Modus Focused Portable has been shown to improve blood vessel development and increase penile size.
-  By fully clearing vascular blockages and accelerating the growth of new blood vessels, Modus Focused Portable therapy delivers a lasting, permanent solution.



# Modus Focused Portable POWERFUL AND DEEP-ACTING SHOCK WAVE TECHNOLOGY

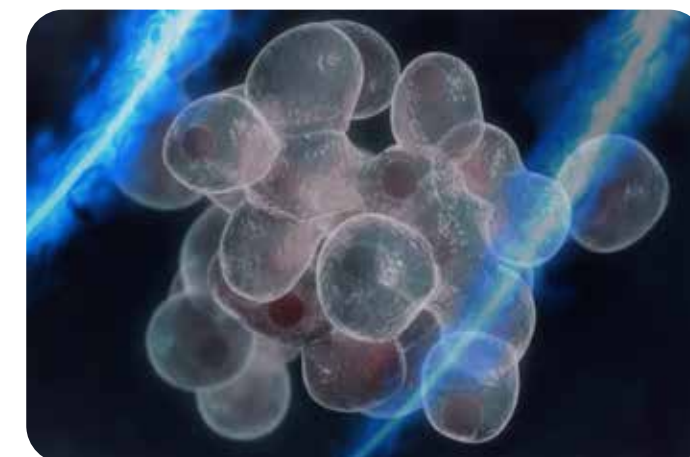
**Modus Focused Portable ESWT** is an innovative shock wave therapy system that operates on the **electrohydraulic principle**. An electrical discharge generated at high voltage produces a **powerful acoustic shock wave** in a fluid medium. These waves are directed to a narrow focal point via specially designed reflectors, ensuring **maximum energy transfer** to the target tissue.

Compared to competing systems such as **piezoelectric** and **electromagnetic ESWT devices**, this technology offers a **wider focal area**, enabling **faster and more effective treatment**.



## FOCUSED SHOCK WAVES THAT TRIGGER *Cellular Regeneration*

Focused electrohydraulic shock waves deliver **intense mechanical force and high energy transfer** to the target tissue. This **biomechanical stimulation triggers cellular regeneration, enhances blood circulation**, and activates the regenerative process. Thanks to its **deep and precise focusing technology**, it ensures **rapid recovery and long-lasting therapeutic effects**.



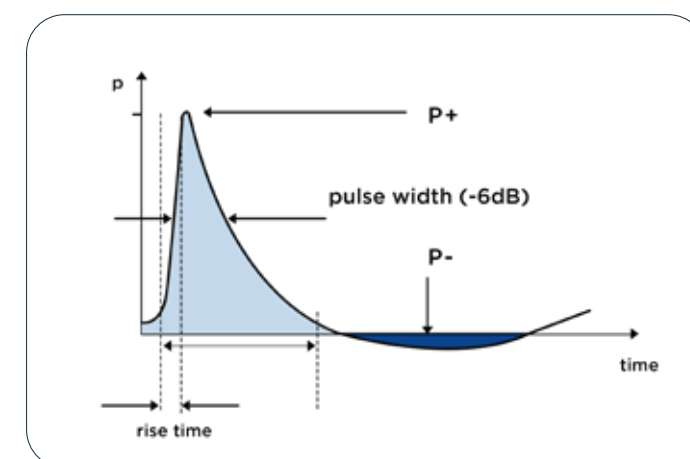
## PRESSURE CHARACTERISTICS OF *Focused Shock Waves*

### Shock Wave Pressure Profile:

The graph illustrates the pressure variation of a shock wave over time. P+ (positive pressure) rapidly peaks with a sharp rise, then gradually decreases, transitioning into negative pressure (P-).

### Pulse Width and Rise Time:

The area marked as "Pulse Width (-6dB)" indicates the effective duration of the pulse, while the "Rise Time" section represents the time it takes to reach peak pressure. A short rise time signifies that the shock wave delivers a rapid and powerful impact.



# TECHNICAL SPECIFICATIONS

Manufacturer Model	İnceler Medikal Sağlık Hizmetleri San. Tic. Ltd. Modus Focused Portable
Quality and Electrical Safety Classification	EN 60601-1 Standard Class I Type B MDR 2017/745 Class IIb (Rule 9) (EMC Test Report No. LVT, Ankara)
Working Principle	Electrohydraulic
User Modes	Continuous, Burst, Auto
Treatment Start/ Stop	Main Unit Button (Touchscreen), Handpiece Button
Dimensions	425 mm x 180 mm x 355 mm
Weight	20 kg
Voltage & Frequency	110-220 $\pm$ 10% VAC 50/60 Hz
Frequency	1-6 Hz
Memory	3 User Defined Treatment Protocol
Power Level	1-25
Display	12.3" Touchscreen
Electrode Lifespan	50,000 Shock
Operating Environment	Temperature: 10°C $\leq$ Temperature $\leq$ 40°C Humidity: 30% RH $\leq$ Humidity $\leq$ 80% RH
Storage Environment	Temperature: -10°C $\leq$ Temperature $\leq$ 40°C Humidity: 20% RH $\leq$ Humidity $\leq$ 90% RH







INCELERMEDIKAL.COM

modusF  
portable

İnceler Medikal Ltd.  
İvedik OSB Mah. 1472. Cad.  
No: 120 Yenimahalle  
Ankara/Türkiye

tel: +90 312 255 3346  
info@incelermedikal.com