



**KATSAN**  
MEDICAL DEVICES

# Hemostat & Mesh

## Product Catalogue



# Hemostat

**Teracel®** Original ORC Sterile Haemostat is an absorbable knitted fabric composed by the oxidised regenerated cellulose. **Teracel®** Original ORC Haemostat is white with a pale yellow in color.

**Teracel®** Original ORC Haemostats used for controlling capillary bleedings and other kinds of bleedings during surgical operations.

**Teracel®** Original ORC Haemostats provide haemostasis within 2-3 minutes.

## Characteristics :

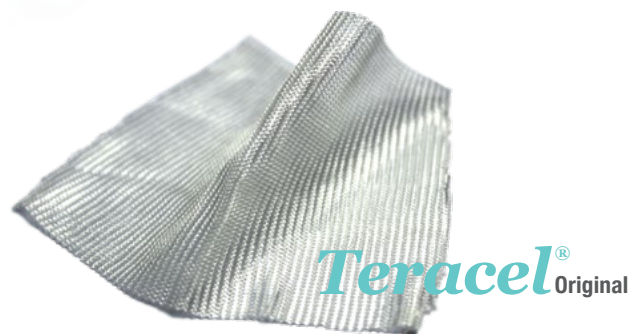
- Excellent Haemostasis
- Low pH has antimicrobial effect
- Very good handling characteristics
- Does not stick to instruments
- Typically dissolves in 2 weeks
- Bactericidal properties
- Compliance with the requirements of USP
- Plant based product with minimal tissue reaction.
- Do not cause irritation to applied body /tissue.

\* **Teracel®** Original ORC Haemostats are sterilized by Gamma irradiation technique

\* **Teracel®** Absorbable Haemostat bio-compatible. ISO - 10993 Bio-compatibility results are available to our customers upon request.

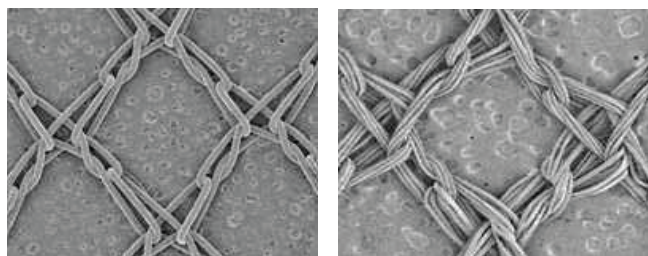
## AVAILABLE SIZES

DIMENSIONS	MEASURING DATA	
	WEIGHT (cm)	LENGTH (cm)
5 cm x 35 cm	4.0 - 6.0	33.0 - 37.0
10 cm x 20 cm	8.5 - 11.5	18.0 - 11.5
5 cm x 7,5 cm	4.0 - 6.0	6.5 - 9.5
1,25 cm x 5 cm	0.9 - 1.6	4.0 - 6.0



**Teramesh® Composite** is a partially absorbable knitted mesh. Manufactured from approximately equal parts of absorbable Polyglycolic acid - co - caprolactone - 25 monofilament fiber and non-absorbable polypropylene monofilament fiber. Absorbable part of mesh is homogeneously absorbed in 90-110 days, after absorption of PGCL component, only PP mesh remains and provides maximum patient comfort.

**Teramesh® Composite** can be use in open surgery and laparoscopic operations.



**BEFORE**

**AFTER**

**Less Stiff** > After partial absorption, lower risk of pain with more soft and pliable mesh.

**Minimized foreign body** > Lower risk of long-term side effects due to less residual foreign body remained after partial absorbability.

**Sufficient strength** > Before absorption - rigid enough for easy manipulation After partial absorption - retains sufficient strength for enduring normal abdominal pressure.

\* **Teramesh®** composite meshes are sterilized by EO.

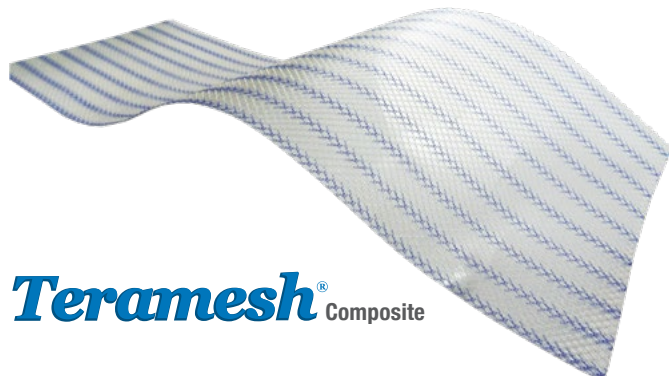
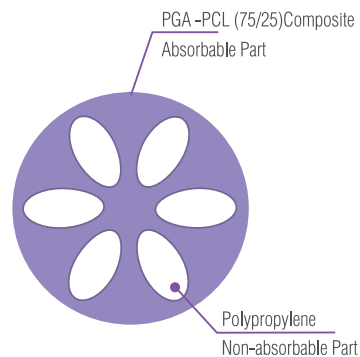
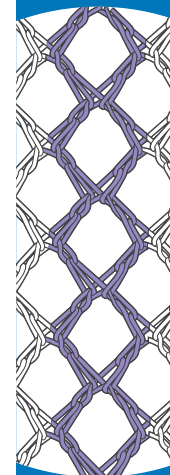
\* **Teramesh®** Partially Absorbable Mesh is bio-compatible. ISO - 10993 Bio-compatibility results are available to our customers upon request.

## PRODUCT FEATURES

STRUCTURE	WEIGHT	PORE SIZE
Monofilament	28~29 g/m2 (after partial absorption)	2~3 mm

## AVAILABLE SIZES

DIMENSIONS
6 cm x 11 cm
10 cm x 12 cm
10 cm x 15 cm
15cm x 15 cm
15 cm x 30 cm
30 cm x 30 cm
7,5 cm x 15 cm



**Teramesh® Composite**



**Teramesh® Non-Absorbable**

MESH

# KATSAN

MEDICAL DEVICES

---

KATSAN KATGUT SANAYI VE TICARET A.S.

**HEADQUARTERS**

AOSB Mah. 10041 Sk. No:22 Cigli - IZMIR - TURKEY  
Tel: + 90.232486 09 10 - 486 11 85 - 486 01 31 • Faks: +90.232486 33 79

**NORTH AMERICA**

4938 Lochside Drive, V8Y 2E4, Victoria BC

e-mail: [info@katsanas.com](mailto:info@katsanas.com)

[www.katsanas.com](http://www.katsanas.com)